



## **New Business and Learning Centre, Nuneaton**

For Warwickshire County Council

DEVELOPMENT OF A NEW BUILDING TO INCLUDE A PUBLIC LIBRARY, BUSINESS CENTRE AND CAFÉ

September 2019

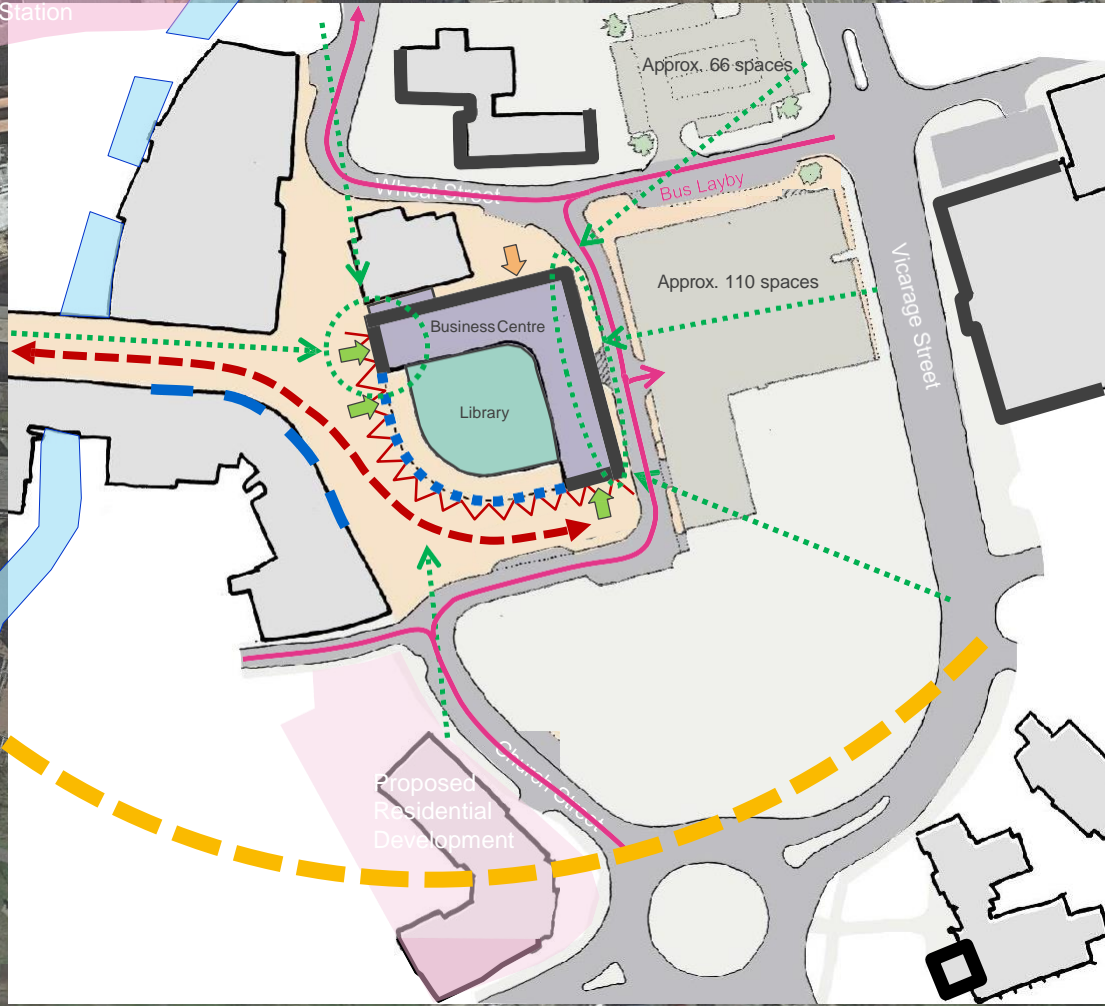
- Landmark community building
- Catalyst for social and economic regeneration
- Centre for learning, skill development, business and enterprise
- Model for sustainable design
- Key building within masterplan
- Full stakeholder engagement and approval

- Create an environment that fosters collaboration and innovation
- Create a sense of place
- Provides active frontage and legible front doors
- Has civic presence
- Is light, transparent and welcoming
- To BCO best practice
  - Workplace wellbeing:*
    - **Choice** – work setting / movement
    - **Light** – promote good daylight
    - **Look & Feel** – colours, graphics, materials, textures
    - **Nature** – biophilic design, bringing the outside in
    - **Activity** – bike storage, showers, gyms
- A benchmark in design quality

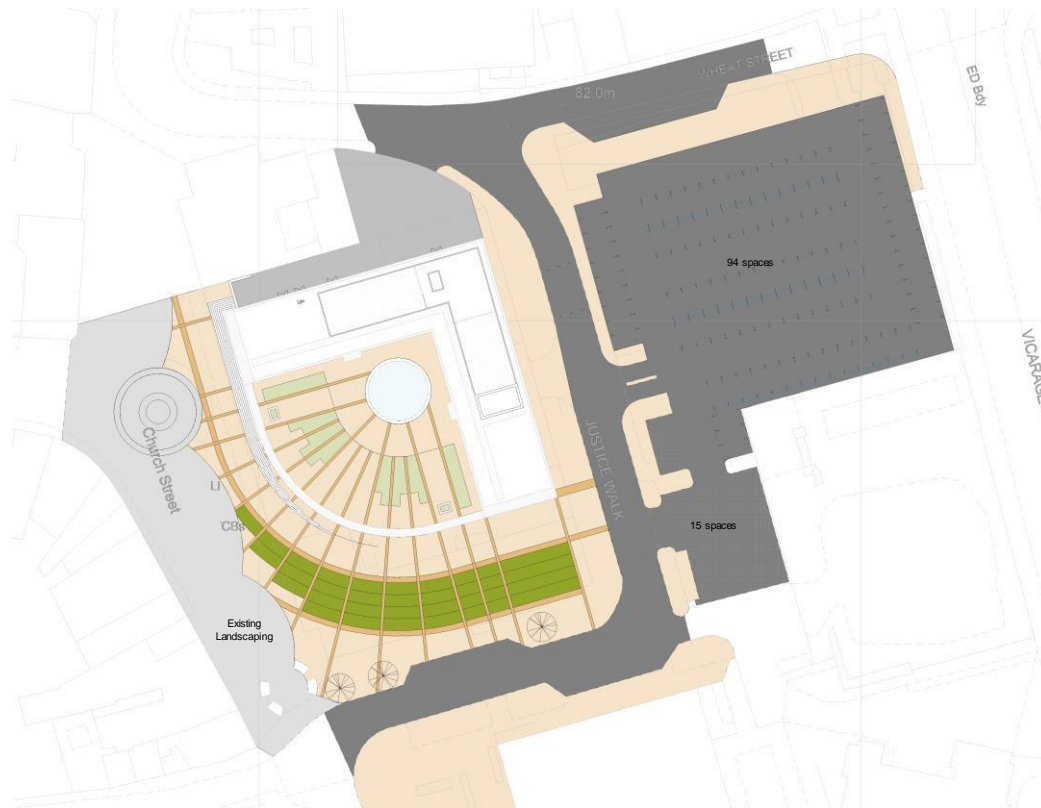
Proposed Leisure Quarter & Redesigned Bus Station

Library at the heart of the building, facing the public realm in order to create an environment that fosters collaboration and innovation, a centre for learning, skill development, business and enterprises.

Centre for Learning and Business



# Phase 1 with Parking



Reconfigured car park to allow bus/ taxi drop off space

Existing car parking repair and white lined as required to give 94 spaces

Existing accessible space reused – 15 spaces available

Total parking provision 109 space combined

New landscape ties into existing block paving – final extent of hard landscaping retention to be confirmed

Soft landscaping to be included as part of phase 1 – plaza created as part of phase 2 and potential wider masterplan



Proposed Leisure Quarter &  
Redesigned Bus Station

Bridge Street

Approx. 66 spaces

Bus Layby

Approx. 40 spaces

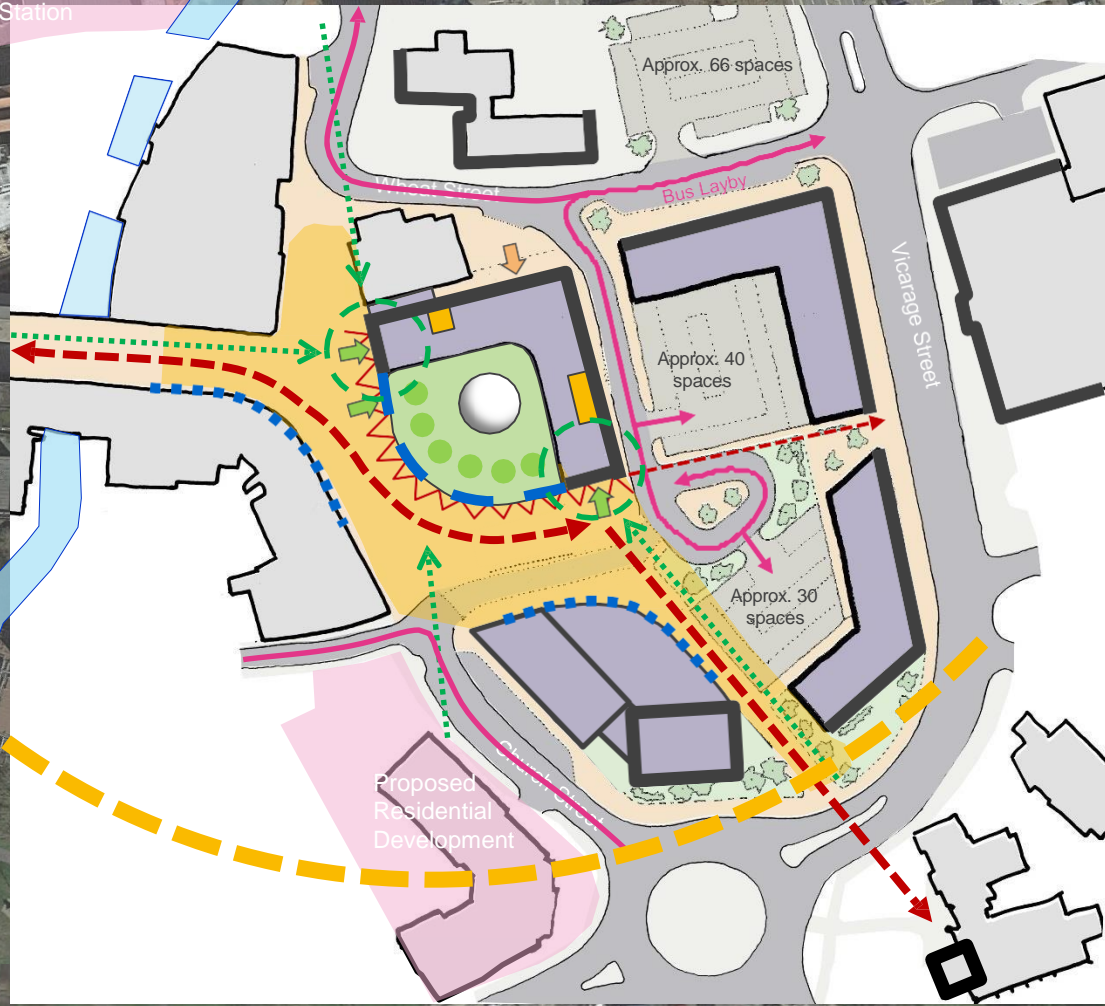
Vicarage Street

Approx. 30 spaces

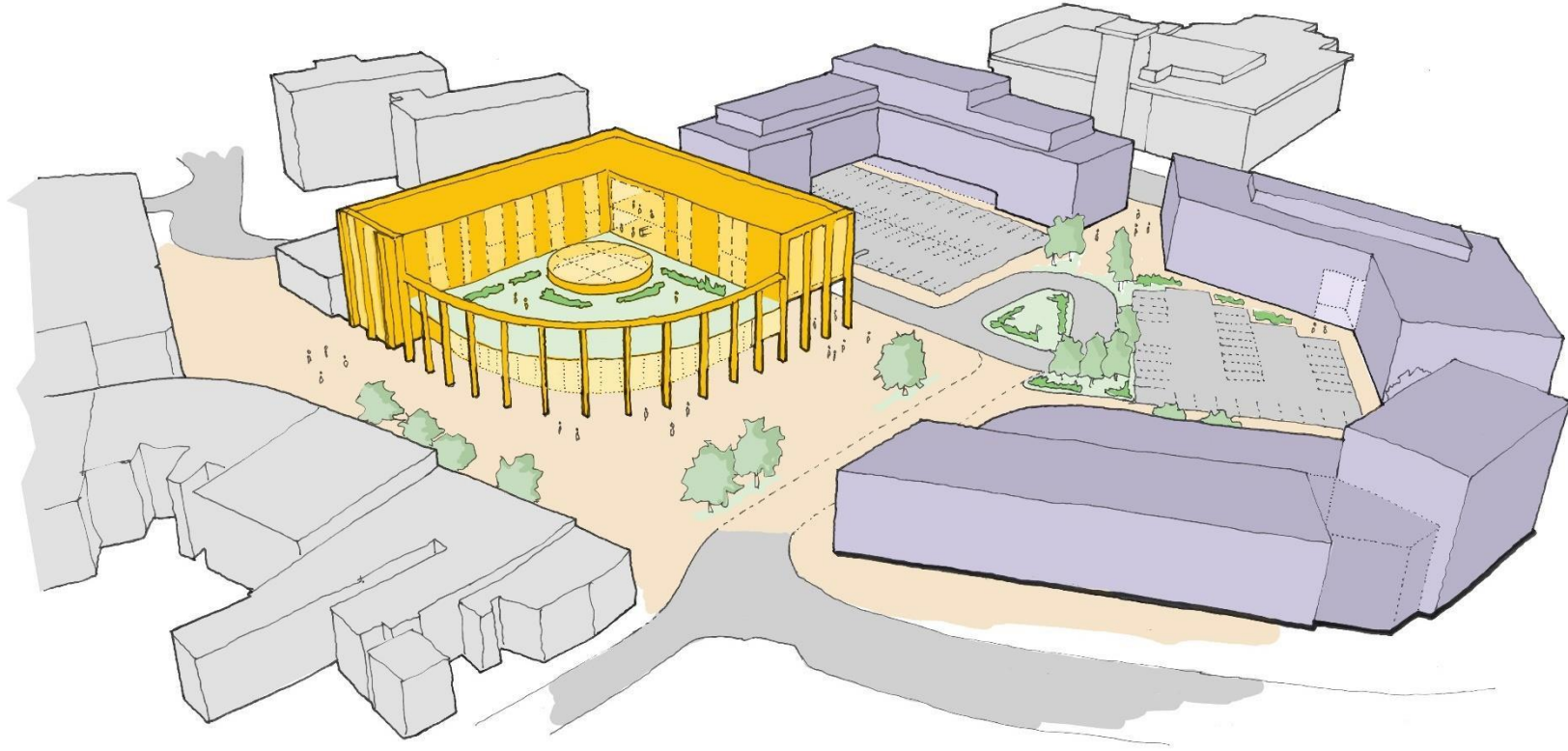
Proposed  
Residential  
Development



Phase Two  
Indicative  
Masterplan Proposal



# Phase Two - Indicative Masterplan Proposal



# Phase One - Nuneaton Library and Business Centre



---

# Phase One - Nuneaton Library and Business Centre

---

ASSOCIATED  
ARCHITECTS 





---

# Phase One - Nuneaton Library and Business Centre

---

ASSOCIATED  
ARCHITECTS 



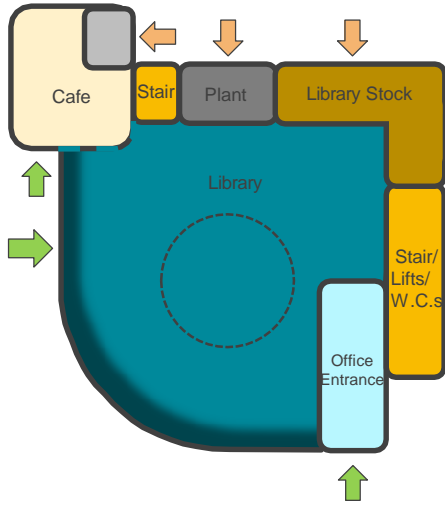
---

# Phase One - Nuneaton Library and Business Centre

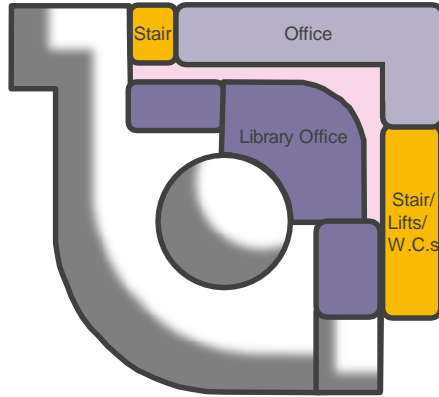
---



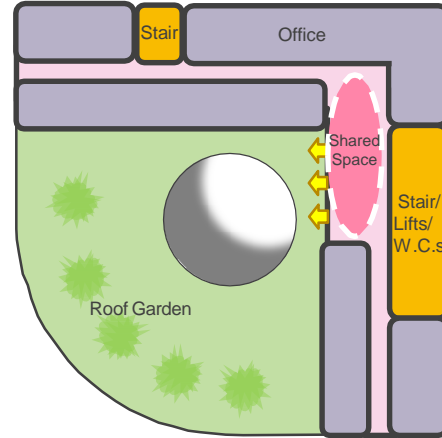
# Floor Plan Organograms



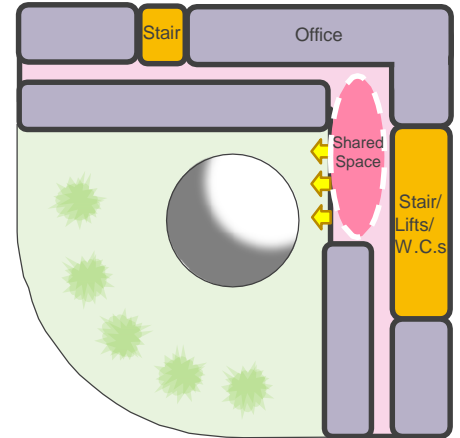
Ground Floor



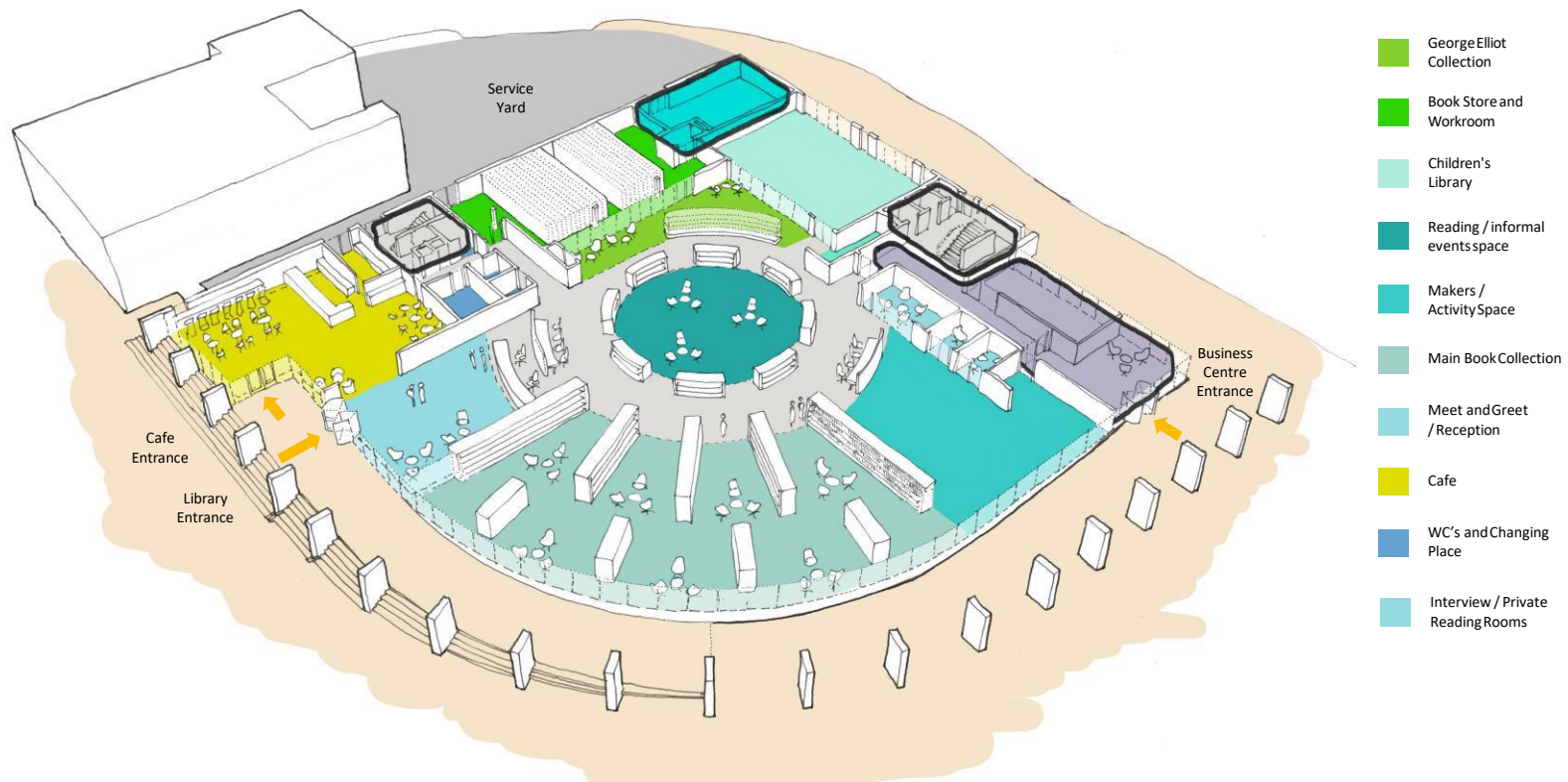
First Floor

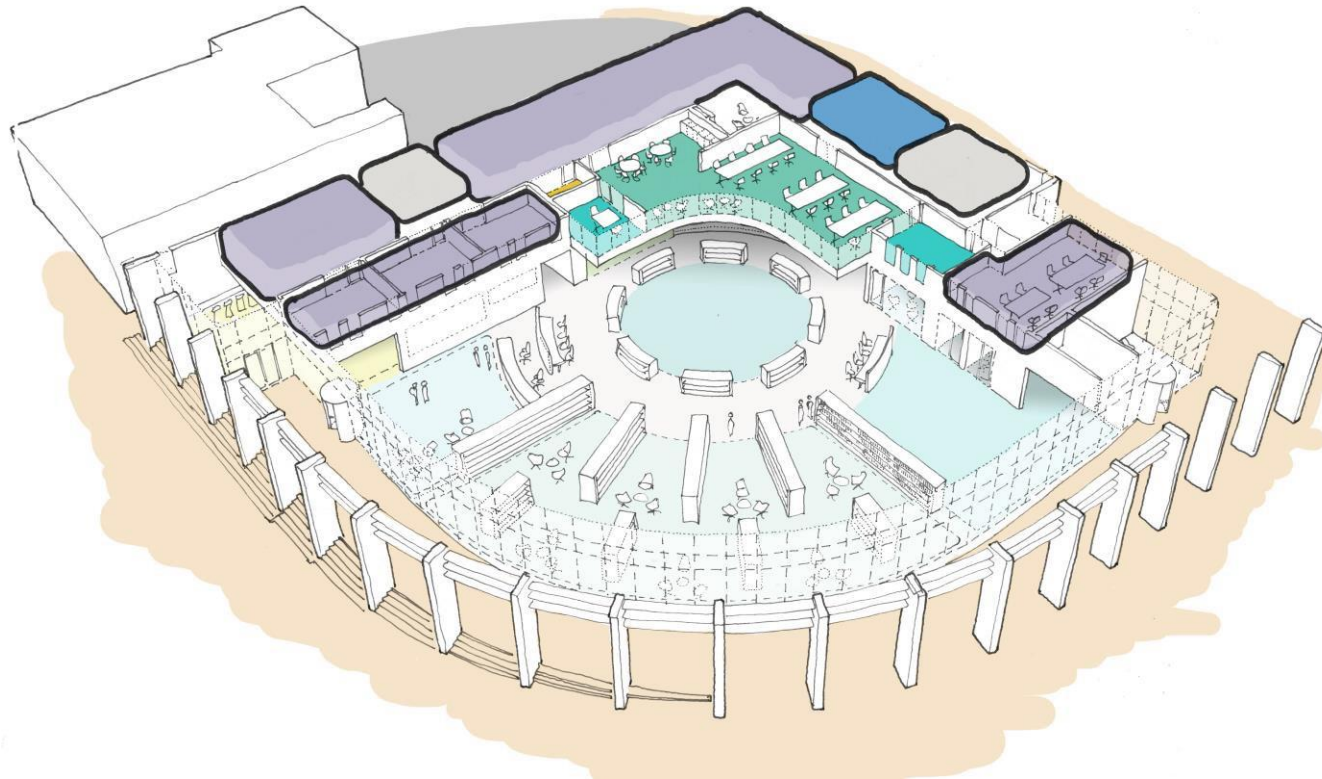






Second Floor



Third Floor





-  Library Hub and Hot desking space
-  Library office and Store
-  Interview Room
-  WC's